



Welcome to Smithfield Station!

We hope you enjoy your stay in our family-owned waterfront hotel, celebrating over 35 years in business! While here, please enjoy the use of our many amenities, this charming town, parks, and local merchants. If there is anything that you desire during your stay, please be sure to ask and we will do our best to make sure it happens.

Yours in hospitality,

Randy and Brian Pack
Pack Brothers Hospitality

SMITHFIELD STATION HOTEL

Front Desk: **Dial 0**

Wifi Network: Guest Internet

Password: dockdrinkdine

44 Guest Rooms and Event Space for 10 - 100!

BUSINESS CENTER

Located on the second floor of The Lodge.

OUTDOOR SEASONAL POOL

Open May 1 - October 31

Towels available at the pool.

RESTAURANT AT SMITHFIELD STATION

Hours: 11am-9:30pm Daily, 11am-10pm Fri/Sat

Sunday Brunch Buffet: 8am-12pm

**Note: restaurant closes a half hour earlier during off season.*

Room Service #: **Dial 4007**

Continental Breakfast: Mon-Fri 6am-9am, Sat 7am-9:30am

THE IBX BAR

Hours: 11am-10pm Daily, 11am-11pm Fri/Sat

WINDSOR CASTLE PARK

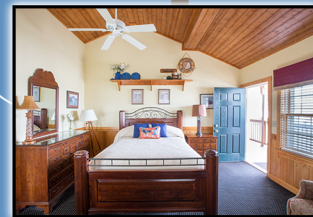
The park is located across the street from us by foot bridge and contains 4.5 miles of pristine walking trails, outdoor playscapes, as well as paddleboard and kayak rentals!

KAYAK RENTALS

WindsorCastlePark.com/kayakrentals



Lighthouse Suites
100 & 200



Boardwalk
Rooms
170, 160, 150



RESTAURANT:
1st Floor
2nd Floor:
201 - 209
3rd Floor:
301 - 311

THE STATION
RESTAURANT & BAR



2nd Floor:
2211 - 2209
3rd Floor:
3311 - 3323
LIBRARY:
3rd Floor
BUSINESS
CTR: 2nd Floor

HOTEL
LOBBY

THE LODGE



2nd Floor:
2201 - 2209
3rd Floor:
3301 - 3309
CONFERENCE
ROOM:
1st Floor

Entrance
To Park



Follow and tag us on social!

#SmithfieldStation